


Ceres et Proserpina

A short introductory reading from  **ASCANIUS**
The Youth Classics Institute



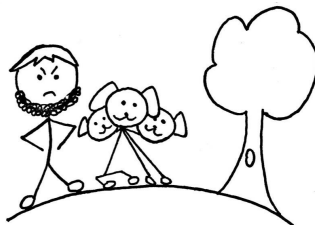
**Ceres Proserpinam amat.
Ceres et Proserpina sunt laetae.**



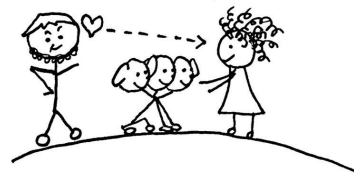
Ceres et Proserpina in terrā habitant.



**Pluto sub terrā habitat.
Pluto non est laetus.**



Pluto et Cerberus terram visitant.



**Proserpina Cerberum videt et amat...
et Pluto Proserpinam amat.**



**Pluto Proserpinam prehendit.
Pluto et Proserpina sub terram eunt (go).**



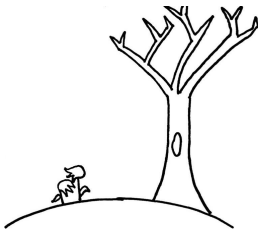
**Proserpina non in terrā sed sub terrā habitat.
Proserpina est tristis.**



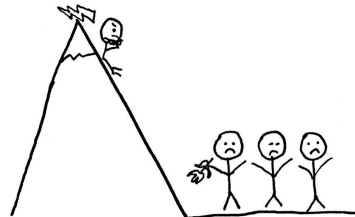
Proserpina VI semina devorat...et lacrimat.



Mater Ceres quoque est tristis.



**Quod Ceres est tristis,
fiores et plantae sunt mortuae.**



**Populi in terrā sunt tristes.
Iuppiter consilium capit.**

VI MENSES



VI menses Proserpina in terrā habitat.
VI menses Proserpina sub terrā habitat.

VI MENSES



VI menses Ceres est laeta.
Flores et plantae non sunt mortuae.

VI MENSES



VI menses Ceres est tristis.
Flores et plantae sunt mortuae.

HAEC EST CAUSA ☼
TEMPESTATUM

Haec est causa tempestatum (seasons).